

LOWER LEVEL

Aux Gym is on the same level as arena floor (slight ramp up)

Door width is 33"

Loading Dock (street level)
9'h x 8'w door
ceiling is 8'

outside prop storage

inside prop/floor storage if needed

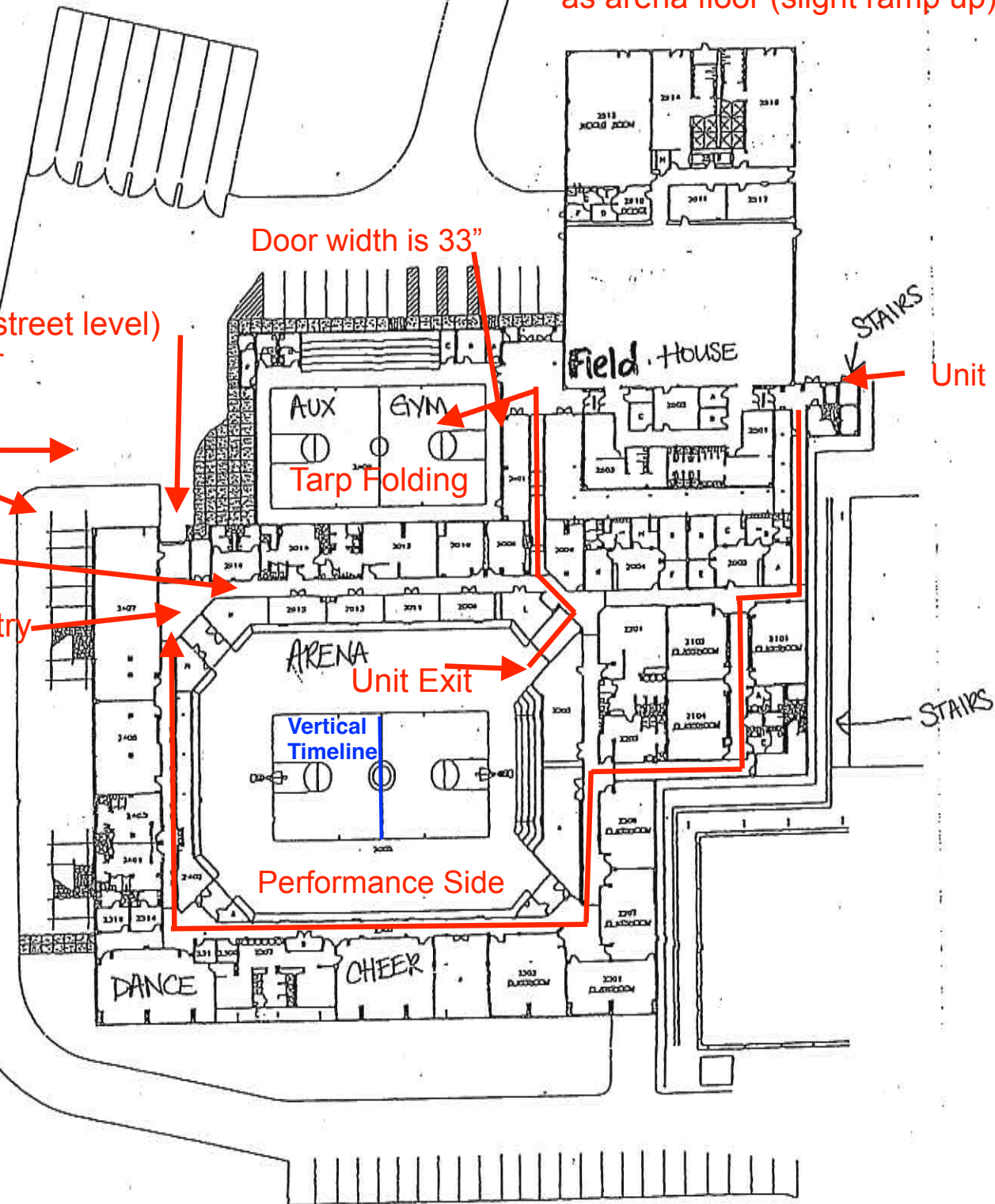
Unit Performance Entry

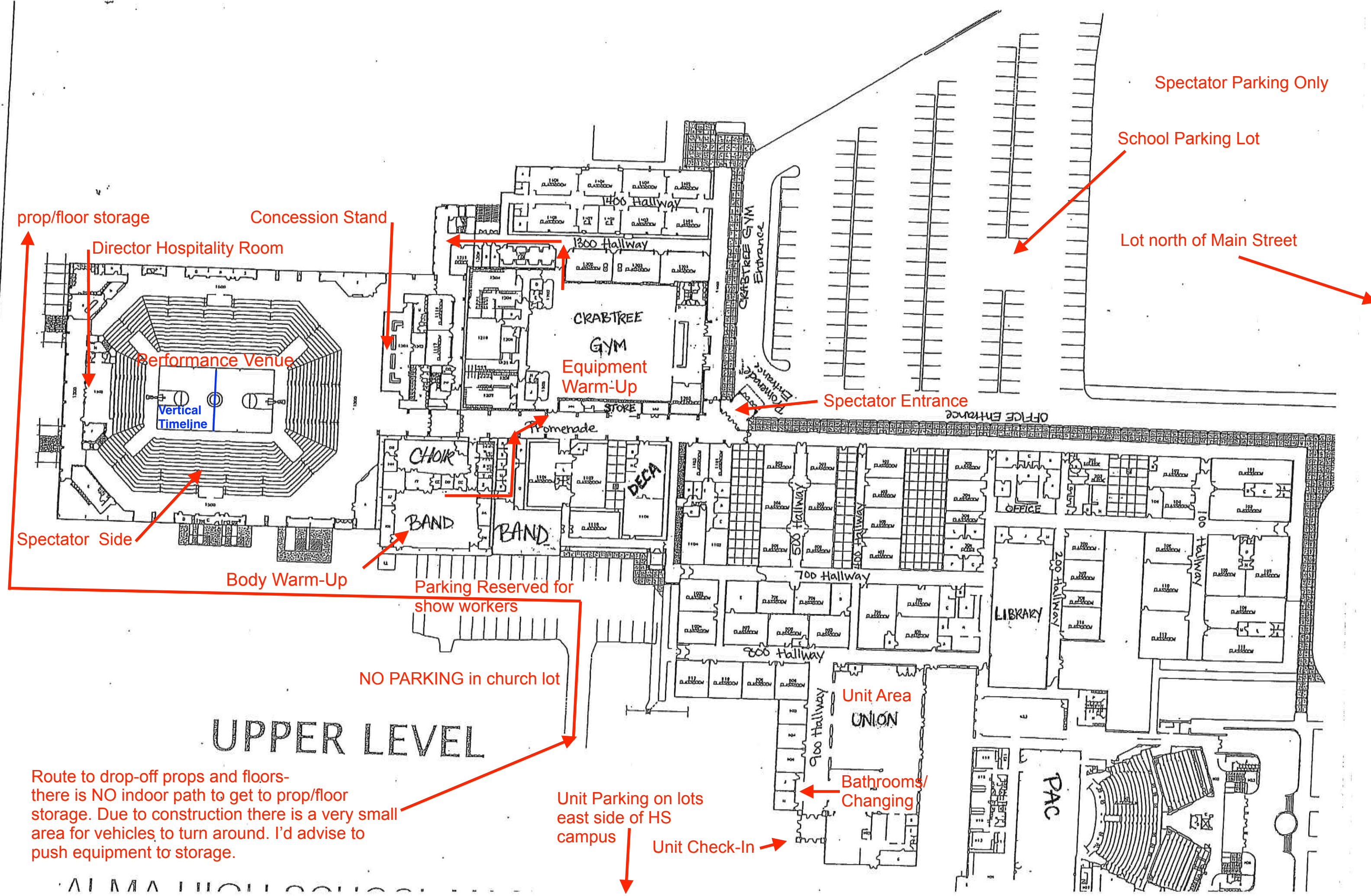
Unit Exit

Unit Entry to Arena

Performance Side

Vertical Timeline





prop/floor storage

Concession Stand

Director Hospitality Room

Performance Venue

Vertical Timeline

CRABTREE GYM

Equipment Warm-Up

Spectator Entrance

Spectator Side

Body Warm-Up

Parking Reserved for show workers

NO PARKING in church lot

UPPER LEVEL

Route to drop-off props and floors- there is NO indoor path to get to prop/floor storage. Due to construction there is a very small area for vehicles to turn around. I'd advise to push equipment to storage.

Unit Parking on lots east side of HS campus

Unit Check-In

Bathrooms/Changing

Unit Area UNION

LIBRARY

PAC

Spectator Parking Only

School Parking Lot

Lot north of Main Street